

# Pedestrian Crossings-Terminal to Garages

## Hartsfield-Jackson Atlanta International Airport

### LOCATION:

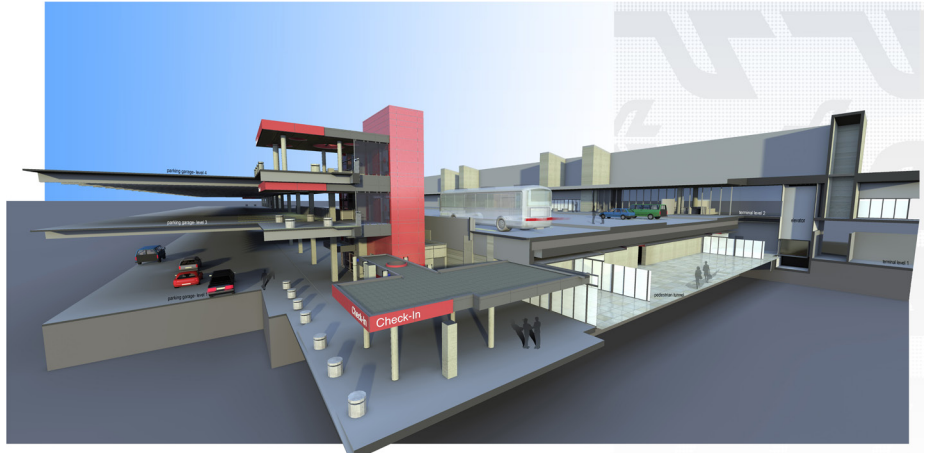
Atlanta, Georgia

### CLIENT:

Hartsfield-Jackson Atlanta  
International Airport

### PROJECT DATA:

elevators  
stairs  
escalator  
canopies



### SERVICES:

Program Verification  
Interiors/FFE  
Architectural Design  
Construction Administration

### COST:

\$26,000,000

### DATE OF COMPLETION:

2014 (est)

### CONTACT INFORMATION:

Bob Liber, Utility Manager  
Hartsfield-Jackson Development Program  
404-530-5718  
Cell: 678-410-8810

The goal of this project is to provide safe pedestrian access from the existing parking decks to the main terminal, to eliminate pedestrian traffic across the upper level roadways from the parking decks to the terminal and to accommodate the anticipated increase in pedestrian traffic at the airport through the year 2030.

Programmatically, new elevator and stair cores will be connected to the garages to transfer all pedestrians to the lower level curbside. The lower level terminal tunnels will receive all pedestrians entering the terminal from the garages. Canopies are included to provide weather protection at all levels. There are four transfer points - two accessing the north terminal and two accessing the south terminal.

The design solution centers about the creation of two simple masses per transfer point. The stair mass is to be constructed of poured in place concrete and curtainwall providing natural light and openness for security purposes. The elevator core is wrapped in metal panels in a "mosaic" pattern. The colors correspond to the airport colors for the two terminals (south-red/north-blue). Large canopies are punctuated with circles. Consideration was given to future replacement of the parking decks - the stairs and elevators are designed to be modifiable.

