

Columbia Park/Avondale Parking Deck

LOCATION:

Decatur, GA

CLIENT:

Decatur Housing Authority/
MARTA

PROJECT DATA:

759-car parking deck

SERVICES:

Programming
Architectural Design
Construction Documents

COST:

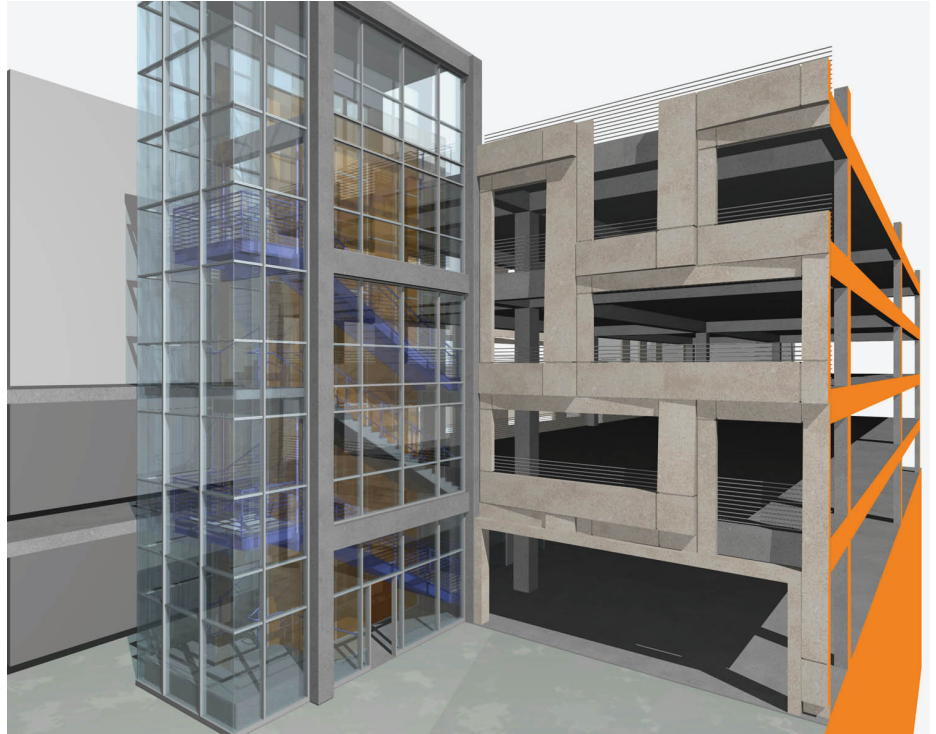
\$11,000,000

DATE OF COMPLETION:

Project Abandoned

CONTACT INFORMATION:

Paul Pierce, Director
Decatur Housing Authority
PO Box 1627
Atlanta, GA 30031
404.270.2105
pap@decaturha.org



The project was envisioned as a joint venture between the Decatur Housing Authority and MARTA as a transit-oriented, mixed-use development. The facility combines retail space, residential apartments, parking deck, and a physical connection to the Avondale MARTA station. Our firm was responsible for the parking deck portion of the project. Work included collaboration with all team members in order to produce a seamless project. The program requirements were complicated with requirements for segregated parking for MARTA patrons and apartment tenants.

The design of the parking deck is unique - its double-helix configuration allows the two individual users to share the same building while simultaneously maintaining their separate space. The deck is designed of cast-in-place concrete, with an exterior precast concrete panel system in specific locations. A two-level bridge connects the parking deck to the adjacent apartment buildings and the existing bridge to the Avondale MARTA station.